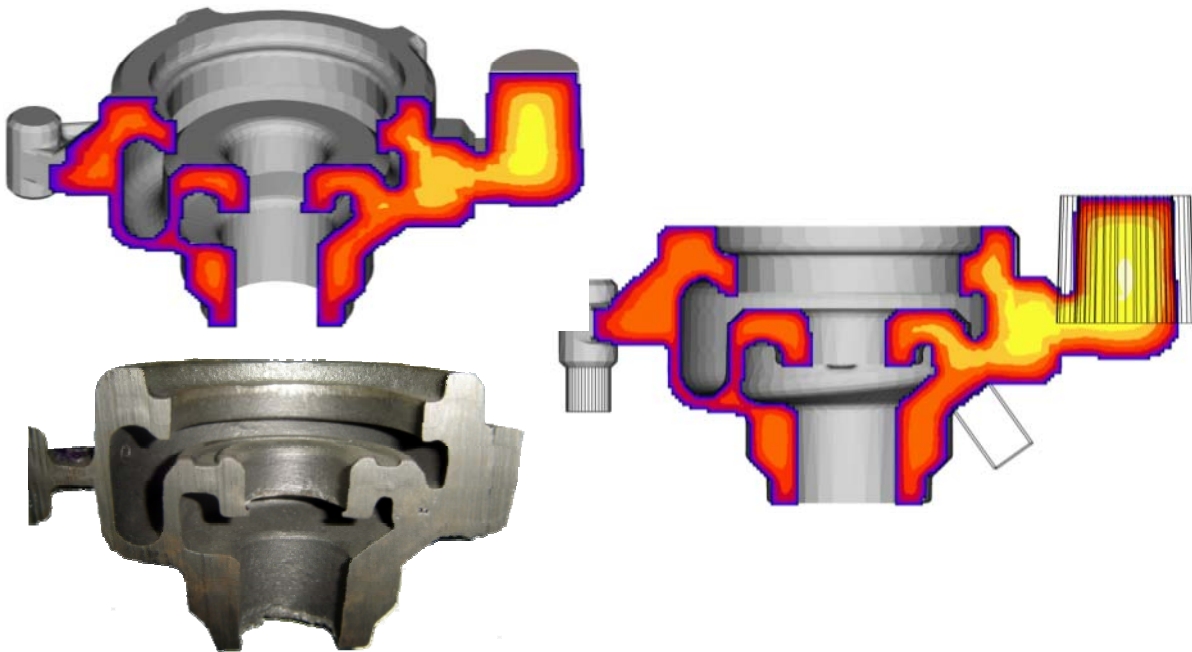
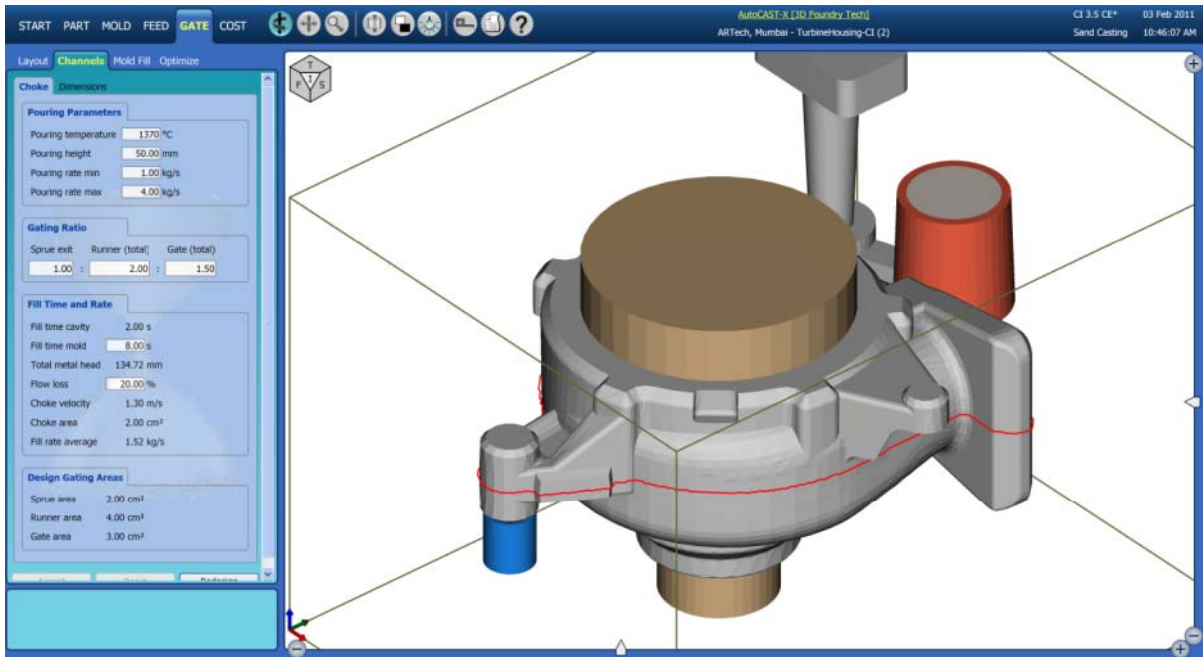


 **AutoCAST-X**™  
*Methoding... In minutes*

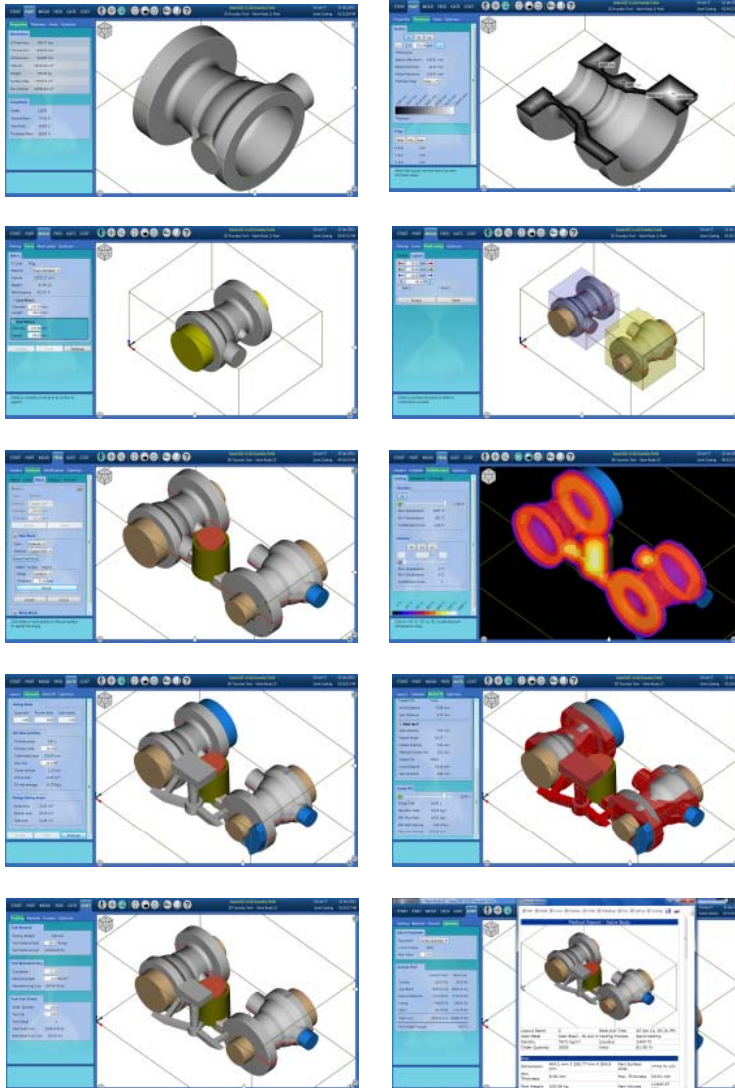


Flexible

Reliable

Affordable

# AutoCAST-X Specifications



## PART Module

- Geometric properties, shape complexity
- Thickness, reference radiograph
- Hole feature recognition
- Part-process compatibility evaluation

## MOLD Module

- Part orientation and parting line
- Core print design, plug drilled hole
- Mold size and cavity layout
- Metal-mold ratio optimization

## FEED Module

- Feeder location, design, model
- Feedaids: sleeve, chill, padding, fin, vent
- Solidification simulation, shrinkage
- Automatic feeder size optimization

## GATE Module

- Sprue, gate, runner layout
- Gating channel design and model
- Mold filling simulation
- Automatic gating optimization

## COST Module

- Tooling cost, amortized
- Cast metal, mold material
- Process: energy, labor
- Cost comparison and analysis

## RECOMMENDED HARDWARE

- ✓ Intel Core 2 or equivalent CPU with Windows XP / 7 operating system (32/64 bit)
- ✓ 4 GB RAM, 80 GB HD, Graphics Card, 21" SXGA Display, USB 2, CD/DVD RW

## EXTERNAL INPUTS

- ✓ CAD file of as-cast part model in standard STL format from a solid modeling program (AutoCAD Inventor, CATIA, I-DEAS, Inventor, Pro-Engineer, SolidWorks, SolidEdge, UG-NX, etc.)

## DATABASE AND REPORTS

- ✓ **Databases:** Cast Metals, Mold Materials, Processes, Mold Sizes, Feeder Sleeves
- ✓ **Project Files:** Multiple layout management, compact storage for mailing and storing
- ✓ **Methods Report:** Automatic generation of methods report with layout image
- ✓ **Image and Video:** Capture and storage of program results and video images

## TECHNICAL SUPPORT

- ✓ **On-site:** Software installation, comprehensive training, benchmarking
- ✓ **On-line:** Web-based project management system, technical resources

Metal Families	
	Aluminum-based
	Copper-based
Processes	Cast iron
Sand casting	Ductile iron
Shell molding	Steels
Investment casting	Super alloys
Gravity die casting	Precious metals
Low pr. die casting	Others

## CONTACT :



**3D Foundry Tech Pvt. Ltd.**  
 CM-05, SINE, CSRE, IIT, Powai  
 Mumbai - 400078, India.  
 Phone: +91 98921 00072  
 E-Mail: babaprasad@autocast.co.in

*AutoCAST is a copyrighted software and trademark of Advanced Reasoning Technologies Pvt. Ltd., Mumbai.*

[www.autocast.co.in](http://www.autocast.co.in)